

Exchange Rates, Stock Prices, and Stock Market Uncertainty*

Fatemeh Salimi Namin

Aix-Marseille University, CNRS, EHESS, Centrale Marseille, AMSE, France

Job Market Paper

November 2020

Abstract

While the reference framework for international portfolio choice emphasizes a mean-variance framework, uncovered parity conditions only involve mean stock or bond returns. We propose to augment the empirical specification by using the relative stock market uncertainty of two countries as an extra determinant of their bilateral exchange rate returns. A rise in the relative uncertainty of one stock market will lead capital to flow to the other stock market and generate an appreciation in the currency of the latter. By focusing on the JPY/USD exchange rate returns during the most recent decade (2009-2019) and relying on a nonlinear framework, we provide evidence that the Japanese-US differential stock market uncertainty affects the JPY/USD returns both contemporaneously and with weekly lags. This finding is robust when we control for the stock returns differential and the differential changes in Japanese and US unconventional monetary policy measures.

Key words: exchange rate determination, implied volatility, UEP, flight to safety, flight to quality

JEL classification: F31, F32, G15

* I am grateful to Eric Girardin for helpful discussions and suggestions. I also would like to thank, without implicating, Guglielmo Caporale, Yin-Wong Cheung, Christelle Lecourt, Gilles Dufrenot, Kate Phylaktis, Rosnel Sessinou and Zhichao Zhang for their useful comments and suggestions. I also thank Melissa Horn for her help in proofreading. This work was supported by the French National Research Agency Grant ANR-17-EURE-0020.

Address: Maison de l'économie et de la gestion d'Aix, 424 chemin du viaduc, 13080 Aix-en-Provence

Email address: Fatemeh.salimi-namin@univ-amu.fr

1 Introduction

Modern Portfolio Theory (Markowitz, 1952), in its domestic as well as international versions¹ has been based on the first two moments of asset prices, i.e., mean returns and variances. But uncovered parity conditions, specifically Uncovered Interest Parity (UIP) and Uncovered Equity Parity (UEP) (Cappiello and De Santis, 2007; Hau and Rey, 2008, 2006) seem to take a step backward from the mean-variance framework. They assume that capital flows and exchange rate movements are only induced by two countries' mean (bond or stock) returns differential.² The role of the second moment as a measure of uncertainty or risk is thus overlooked in investors' portfolio choice. As a result, despite evidence on the impact of market uncertainty on capital flows (Balakrishnan and Goncalves, 2008; Nier et al., 2014), the relative uncertainty of two countries' financial markets has not been seriously considered as a driver of exchange rate movements.

In this study, we set three objectives. Our primary goal is to evaluate, for the first time, to what extent the relative uncertainty in two countries' financial markets affects the decision of stock investors to move their investment to the safer/higher-quality market, which in turn appreciates its currency. Consistent with the time-varying effect of uncertainty on financial markets, we pursue this objective in a nonlinear framework. As our second objective, we aim to re-examine the power of relative stock returns in driving exchange rate returns, as suggested by UEP. To do so, we revisit the relationship between the stock returns differential and exchange rate returns in a nonlinear framework. Our third objective is to evaluate the role of the differential between two corresponding countries' monetary policy stances in driving exchange rate movements. This objective is inspired by UIP, which proposes interest rates differential to be a driving force of exchange rate movements. When the zero-lower bound (ZLB)³ binds in both corresponding countries, and Unconventional Monetary Policies (UMP) are implemented, the interest rate differential cannot be informative. Instead, we shift our attention toward the differential changes in UMP measures and their nonlinear effect on exchange rate movements.

The main focus of our empirical analysis is on the Japanese yen-US dollar exchange rate (JPY/USD), which is the second most traded currency pair in the global foreign exchange market, after the euro-US dollar (Bank for International Settlements, 2019). We choose this currency pair because it serves as a typical example of the failure of standard variables to drive exchange rate movements. For instance, according to previous studies, the movements of this currency pair do

¹ For a review of early literature on international portfolio choice and asset pricing theories refer to Stulz (1995) and Adler and Dumas (1983).

² Exchange rate changes are expected to equalize the mean returns from domestic and foreign bonds under Uncovered Interest Parity (UIP) condition and the mean returns from domestic and foreign stocks under Uncovered Equity Parity condition (Cappiello and De Santis, 2007; Hau and Rey, 2008, 2006).

³ Zero-lower bound binds when the government, in order to stimulate the economy, has used expansionary monetary policy to the point where the short-term interest rate hits zero. Further stimulating policies should be followed in the form of unconventional monetary policies such as quantitative easing implemented in the US in the aftermath of the global financial crisis in 2008.

not comply with UEP (see Hau and Rey (2006) and Curcuru et al. (2014)), and the relationship of the movements of this exchange rate with the UMP measures do not have the expected sign (see Ueda (2012)).

We explore the dynamics of the JPY/USD over the most recent period, after the global financial crisis, from 2009 to 2019. During this period, the two countries experienced episodes of (near-) zero interest rates, and both implemented large-scale UMP.⁴ Conducting such an analysis for the pre-crisis period would require a comparison between two different measures for monetary policy stances of the countries, such as interest rates for the US and reserves growth for Japan, which would be unusual. However, similar measures of the monetary policies of the two countries since 2009 allow us to use a differential UMP variable, facilitating comparison and interpretation. We refrain from including the crisis period during which extreme outliers and noises caused by high volatility may distort estimation results, and because some UMPs were not yet in place.

In this paper, to proxy for stock market uncertainty, we rely on implied volatility indices, such as the VIX index and its counterparts for other stock markets, among the broad range of financial and economic uncertainty measures. We do not intend to thoroughly review these measures here since it has been done by Caporale et al. (2019) and Ferrara et al. (2017). The VIX of the Chicago Board of Exchange is constructed on the basis of the S&P 500 option prices and is a generally accepted proxy for the uncertainty of the US stock market, even being customarily labeled the “fear gauge”. This index has received supportive evidence concerning its explanatory power with respect to various financial markets such as emerging stock markets (Sarwar and Khan, 2019, 2017), commodity-related equities (Badshah et al., 2013; Boscaljon and Clark, 2013; Jubinski and Lipton, 2013; Sari et al., 2011), as well as for capital flows (Balakrishnan and Goncalves, 2008; Nier et al., 2014).

In addition to being reliable uncertainty proxies, we chose implied volatility indices because they suit our purpose in three ways. First, they have a forward-looking nature. Second, they are available at a high frequency. And finally, they represent financial (and not economic) uncertainty. However, such proxies have been criticized in as much as they would not be able to reflect the Knightian uncertainty⁵ since they do not exclusively reflect uncertainty but include some forecastable components referred to as risk. Distinguishing between uncertainty and risk components can be essential to establish which one of them is dominantly affected by macroeconomic fundamentals.⁶ However, such a decomposition is not necessary for the present study because both components may impact investors’ portfolio choice in a similar way, though

⁴ Japan has started much earlier in 2001 but reinforced its policies after the global financial crisis.

⁵ Knight (1921) differentiates uncertainty from risk by defining the former as a situation in which the likelihood of events happening is not forecastable while the latter relates to a situation in which the probability distribution of events is known.

⁶ Bekaert et al. (2013) propose an approach to decompose the VIX index into uncertainty and time-varying risk components.

to different extents. Therefore, in this paper, when using these indices, we follow Bloom (2014) in referring to the broad definition of uncertainty, which is a mixture of risk and uncertainty.

In contrast to the implied volatility indices, other proxies of financial uncertainty are at least partially constructed based on historical data and do not fully reflect expectations. For example, the realized volatility of stock markets employed by Chauvet et al. (2015) is a backward-looking proxy. In turn, the variance risk premium proposed by Bollerslev et al. (2009) and employed by Londono and Zhou (2017) and Aloosh (2014) relies on the difference between the realized and implied variances, creating a combination of forward-looking and backward-looking components.

Economic policy proxies are usually meant to capture economy-, business- or firm-level uncertainties and are not limited to financial uncertainty. For instance, the most popular economic uncertainty proxy, i.e., the news-based Economic Policy Uncertainty (EPU) index of Baker et al. (2016), reacts more to policy-related events as opposed to the VIX which is highly affected by financial events (Baker et al., 2016). Similar to VIX, EPU has been used in a diverse range of applications, particularly for predicting business cycles (see Caporale et al. (2019)). Similarly, Bachmann et al. (2013)'s empirical business-level proxies are constructed using business climate survey data. A major drawback of economic uncertainty proxies (except econometrically-generated, and thus ex-post ones) is that in contrast to implied volatility indices, they are available neither at high frequencies nor for all countries.

Recently, sophisticated econometrically-driven proxies have been proposed—for instance, by Ferrara et al. (2014) with a conditional volatility model, Jo and Sekkel (2019) with a factor stochastic volatility model, Gilchrist (2014) based on firm-level time-varying equity volatility, and Carriero et al. (2018) thanks to the use of a large VAR model with stochastic error volatility depending on aggregate macroeconomic and financial uncertainty, among many others (refer to Ferrara et al. (2017) and Carriero et al. (2018) for comprehensive list of previously proposed measures). These econometrically-driven proxies are also backward-looking and indicate economic rather than financial uncertainty. Finally, the recursive estimation of expectations by Jurado et al. (2015) and Joëts et al. (2017) help create a forward-looking measure using a sophisticated stochastic volatility model for the unpredictable component of a large set of macroeconomic and financial variables.

This study draws on three strands of literature. First, we draw on the emerging literature that emphasizes the ability of stock markets' uncertainty to predict exchange rate movements. Intuitively, when high stock market uncertainty or volatility is accompanied by low equity prices, investors fly to safety or quality (Baele et al., 2018).⁷ Because capital flows connect stock markets

⁷ Rebalancing portfolios toward safer assets which are less volatile and more liquid such as government bonds, gold, or safe haven currencies such as the Japanese yen, Swiss franc or the US dollar, following heightened uncertainty and low returns in the market, is known as flight to safety or quality. For theoretical background on flight to safety refer to Vayanos (2004), Caballero and Krishnamurthy (2008) and Brunnermeier and Pedersen (2009) among others.

through the foreign exchange market, the movements of capital toward the safer market induce an appreciation of the currency corresponding to the safer market, with more intensity during periods of market stress (Vayanos, 2004). Among the few studies which investigate this relationship, Londono and Zhou (2017) show that the US stock variance risk premium can forecast exchange rate movements. They use the US stock variance premium as a measure of unexpected volatility computed as the difference between the option-implied and the expected realized stock variance. They find that a higher stock variance risk premium indicates a rise in uncertainty in the US stock market, which in turn depreciates the USD.⁸ In a similar attempt, Aloosh (2014) finds evidence of the predictability of the returns of the euro, yen, and British pound against the USD by a value-weighted average stock variance risk premium at a one-month horizon.⁹

A shortcoming of this strand of literature stems from the unilateral view underlying the variance risk premium. This view can result in biased conclusions, specifically in cases when both currencies involved are safe-haven currencies such as the JPY/USD. In such cases, an investor needs an evaluation of the relative uncertainty of the two corresponding countries, which can affect exchange rate movements.¹⁰ Therefore, we put forward the use of a simple differential measure, consistent with the comparative view of an investor to the uncertainty of two stock markets. We call it “differential fear” or the implied volatility (IV) differential. It is defined as the difference between the CBOE’s implied volatility index (VIX) and its Japanese counterpart at the Osaka Securities Exchange, VXJ, calculated based on Nikkei 225 option prices. Besides, we depart from the existing literature by focusing mainly on uncertainty, instead of risk premiums, which involve limitations associated with expected realized variance.

In pursuing the second objective of this study, we draw on the literature on UEP (Cappiello and De Santis, 2007; Hau and Rey, 2008, 2006). This parity condition relies on two underlying mechanisms. The first is that following an outperformance of a foreign over the domestic stock

⁸ In a different approach, Della Corte et al. (2016) and Londono and Zhou (2017) investigate the role of currency risk premium in explaining exchange rates. Della Corte et al. (2016) introduce currency volatility risk premium (“the difference between expected future realized volatility and a model-free measure of implied volatility derived from currency option”). They argue that currencies with low implied volatility relative to historical realized volatility have cheap volatility insurance and vice versa. Therefore, investors rebalance their portfolio toward the currencies with cheaper volatility insurance and predictably induce their appreciation. Similarly Londono and Zhou (2017) use global currency variance risk premium (the average of the differences between option-implied and the realized variance of returns of several currencies against the USD) and find that a higher currency variance risk premium signifies a heightened level of global uncertainty and induces an appreciation of the USD as this currency acts as a safe-haven currency.

⁹ Balakrishnan et al. (2016) blame the lack of attention to the time-varying risk pricing for the failure of traditional models. Using foreign exchange risk premium (constructed based on interest rate different and Consensus exchange rate forecasts), they show that shocks to the global risk sentiment induce dollar appreciation against major currencies complying with the safe-haven status of the USD and flight-to-safety phenomenon.

¹⁰ Looking from a different angle, capital flows, which link different stock markets to the foreign exchange market, are also influenced by the uncertainty in stock markets. In this regard, Nier et al. (2014) document that during volatile periods, the CBOE’s implied volatility index (VIX) is a major determinant of gross capital flows whereas economic fundamentals prevail during low-volatility periods. Fratzscher (2012) also shows that capital flows are influenced by global shock such as crisis and global liquidity and risk.

market, investors repatriate their portfolio to reduce their foreign exchange rate risk. Therefore, capital flows toward the domestic stock market.¹¹ The second mechanism consists of the depreciation of the foreign against the domestic currency in response to the investment repatriation (selling foreign and buying domestic assets).

Despite the logical and intuitive mechanisms underlying UEP, this parity condition has received mixed empirical support. The most extreme case of rejection is reported by Cenedese et al. (2016), who evaluate UEP using a trading strategy for a sample of 43 countries from 1983 to 2011. In attempts to rationalize the unfavorable evidence on UEP, Kim (2011), Fuertes et al. (2019), and Cho et al. (2016) argue that UEP holds when both corresponding countries are among developed countries. They even suggest that for an emerging economy, the relationship between stock returns differential and exchange rate movements can be the opposite of what is indicated by UEP.

Cho et al. (2016) identified that flight to quality during turmoil can be a major driver of exchange rate movements when at least one of the two economies is an emerging one. Along the same lines, Fuertes et al. (2019), find that the divergence from UEP increases in turmoil due to investors' return-chasing behavior, and suggest that risk pricing is essential in exchange rate determination. While Cenedese et al. (2016) blame systematic equity market risk and global equity volatility risk for the failure of UEP, Kim (2011) argues that significant market risk and government restrictions on capital outflows in emerging markets contribute to this failure. In general, these studies agree that the relevance of UEP depends on investors' assessment of the relative uncertainty in two markets. Surprisingly, however, neither of these studies considers that relative uncertainty can play a role in the decisions of an international investor, and subsequently affect capital flows and exchange rate movements.

Finally, to investigate the third objective, we draw on the literature on the effects of UMPs (such as forward guidance, large-scale asset purchases, and Quantitative Easing (QE)), implemented by central banks during the (near-)zero interest rate period, on exchange rate dynamics. The existing literature argues that this kind of policy mainly influences asset prices and, subsequently, exchange rates by affecting market expectations through at least four main channels. The first channel is the portfolio-balance channel aimed at boosting demand for riskier assets, following large purchases of specific assets by the central bank, which reduce their supply and lowers the term premium (Gagnon et al., 2011). The second channel is the liquidity channel through which asset prices are affected by the presence of the central bank as a consistent and significant buyer in the market (Gagnon et al., 2011). The last two channels, which are more informational, are the signaling and the confidence channels. The former can induce demand for (the foreign or domestic) higher-yielding assets by informally communicating the commitment of the central bank to keep yields low (Bauer and Rudebusch, 2014). The latter can affect asset prices by providing information to

¹¹ Although, the true incentive behind capital movements following such an outperformance of the foreign over the domestic market is still open to further research and Curcuru et al. (2014), introduce carry trade or return chasing behaviour of investors as the underlying reason.

investors, through easing announcements, on the current and future good health of the economy (Fratzscher et al., 2018).

The existing literature considers that in an open economy framework, the dominant effect of easing policies is a depreciation of the currency of the country implementing it vis-à-vis the high-yielding currencies (Glick and Leduc, 2012; Kenourgios et al., 2015; Neely, 2015; Rosa, 2012; Ueda, 2012). This effect is anticipated because yields are expected to be low for an extended period in the country implementing UMP, inducing capital outflows. However, Ueda (2012) documented that the JPY, differently from other currencies, appreciated against the USD in response to some UMP announcements by the Bank of Japan (BoJ) from 1999 to 2011.

Most of the literature focuses either on cases where only one of the two corresponding countries implements UMP or completely neglects the equally-important effect of the monetary policies of the other country on the exchange rate (Fratzscher et al., 2018). Accordingly, inspired by UIP and consistent with our relative view, we consider whether the differential of the changes of the UMP measures can partially explain exchange rate dynamics.

In addition to the sign of the effect of UMP on exchange rate dynamics, its intensity can also vary over time. For instance, Gagnon et al. (2011) state that the liquidity channel may be functioning more effectively during the first stages of UMP. Fratzscher et al. (2018) claim that the effectiveness of UMP depends on changes in macro-financial uncertainty, i.e., in periods of low macroeconomic uncertainty, the US capital outflows rise following QE announcements. Therefore, nonlinearity is an essential characteristic of such relationships, which has often been neglected in the literature.

In this study, we use the nonlinear Markov-switching framework of Hamilton (1989) to fulfill our three objectives. The advantage of this model is that it allows time-varying but recurring relationships between variables where regime changes are endogenously determined (as opposed to the structural break detection of Bai and Perron (2003)). We avoid the use of a nonlinear VAR model or a system of equations.¹² In a linear VAR model, the number of parameters grows with the square of the number of variables included in the model, which exhausts the degrees of freedom very quickly, leading to imprecise estimation of parameters (Krolzig, 2003). This problem can be amplified in a Markov-switching framework, in which all model parameters are allowed to switch. Therefore, to avoid the curse of dimensionality, we prefer to consider a single-equation model.¹³

We reach three main results. First, the IV differential plays a significant role in explaining exchange rate dynamics. The findings follow our intuition that higher uncertainty in the Japanese relative to the US stock market encourages investors to rebalance their portfolio toward the less risky market and leads to a depreciation of the Japanese yen vis-à-vis the US dollar.

¹² For the sake of comparison, a linear VAR model is also estimated and the results are available in Appendix.

¹³ Using Granger causality tests, we ensure about the exogeneity of our independent variables of the single-equation model.

Second, we find that the stock returns differential is an important driver of the JPY/USD exchange rate movements at a one-week horizon. Following an outperformance of the Japanese over the US stock market, the Japanese yen depreciates against the US at a one-week horizon. Previous studies never detected this UEP-consistent finding for the JPY/USD, mostly because they rely on samples chosen regardless of the specificities of the two corresponding countries. This effect does not last more than one week, which is in line with the rapid reflection of market participants to events in financial markets.

Third, the differential of the changes in the Japanese and the US UMP measures (reserves growth differential) partially explains the JPY/USD exchange rate movements at one- and two-week horizons. The effect has opposite signs in the two regimes of our model from 2009 to 2019. During the high-volatility regimes of the foreign exchange market, the relationship between the reserves growth differential and the JPY/USD is positive (depreciation of the JPY) in one- and two-week horizons. The depreciation effect is expected inasmuch as more UMP in a country with low-yields finances investments in high-yields countries. However, in the low-volatility regime of the foreign exchange market, the relationship is negative (appreciation of the JPY) at a one-week horizon and changes sign after a week. We conclude that the ultimate effect of a relatively higher increase in the Japanese relative to the US reserves is the depreciation of the JPY against the USD. However, the transitory impact can be affected by the instruments used to implement UMPs.

Our paper contributes to the related strands of literature in several ways. First, the most important contribution of our paper is to put forward a new differential variable as a candidate for the determination of exchange rate dynamics. We underline that not only stock returns differential, but also the differential of stock markets' uncertainty or the "differential fear" can impact exchange rate returns. Second, we provide evidence of the nonlinearity and time-variability of the relationship between the stock returns differential and exchange rate returns. This nonlinear characteristic is highlighted by the fact that while we provide UEP-consistent evidence for JPY/USD over a recent sample, previous studies never found it over earlier samples. And finally, we stress the importance of having a relative view of the monetary stances, stock returns, or uncertainty levels of the two sides of a currency pair when assessing the movement of an exchange rate. An exclusively unilateral view, forgetting the bilateral nature of an exchange rate, may lead to a misleading conclusion.

The rest of the paper is organized as follows: In section 2, we present the data and the modeling strategy we use. In section 3, we provide the results of our empirical investigation concerning the three objectives of this study. Section 4 provides concluding remarks.

2 Data and Methodology

2.1 Data

To test our hypotheses on the determinants of exchange rate movements, we use weekly averages

of the JPY/USD exchange rate returns from January 2009 to July 2019 obtained from the Pacific Exchange Rate Service. Exchange rate returns computed as:

$$R_{l,t} = \ln\left(\frac{P_{l,t}}{P_{l,t-1}}\right) \quad (1)$$

with l being currency pair and $P_{l,t}$ its spot price at time t .

We investigate the power of three differential variables in explaining exchange rate movements. The first is the differential of uncertainty measures of the two countries, which is computed using logarithms of the VXJ and VIX indices. Data on both indices are obtained from Datastream. The IV differential is shown in the lower panel of Figure 1. It is worth mentioning that although the VIX is taken by many as a global uncertainty index, it is, in fact, a composition of both global and US factors (Balakrishnan and Goncalves, 2008). By taking the differential of the VXJ and VIX, we aim for our differential variable to be mostly free from the global factor.

The second variable is the stock returns differential, as suggested by the UEP literature. We compute weekly averages of the differential of the Nikkei 225 and the S&P 500 daily returns as $Diff_SR_t = R_{NIK,t} - R_{S\&P500,t}$ with $R_{NIK,t}$ and $R_{S\&P500,t}$ being calculated following Equation (1) (see the upper panel of Figure 2 for a graph of this variable). We use these two indices as the representatives of the Japanese and the US stock markets, respectively.

The last variable, as suggested by UIP, should be interest rate differential. However, as shown in the upper panel of Figure 2, interest rates of both Japan and the US have been almost zero since the beginning of our sample in 2009. While the Japanese short-term interest rate continues to linger around zero, the US short-term interest rate has been rising gradually since late 2015. Therefore, for the whole sample, interest rate differential (as suggested by UIP) cannot be informative in explaining exchange rate movements. Instead, we focus our attention on UMP measures, which can be used as indicators of monetary policy stances of the two countries.

The quantitative easing policy started in late 2008 in the US in the aftermath of the global financial crisis to stimulate the economy. The policy resulted in financial institutions holding excess reserves with the Federal Reserve. The Federal Reserve started tapering policies in 2013, which led to the decrease of these reserves from early 2014 (lower panel of Figure 1). In contrast to the US, the quantitative easing started much earlier in Japan, in March 2001, to trigger the sluggish economy. The BoJ stopped implementing this policy in 2006, but it was resurged after the global financial crisis in late 2008 at a low pace. In October 2010, the Comprehensive Monetary Easing (CME) policy was launched. Later in April 2013, the Japanese UMP was reinforced in the form of a Quantitative and Qualitative Easing policy (QQE), which was followed by a negative interest rate policy in early 2016. All the policies implemented after December 2010 allowed the BoJ to purchase ETFs in addition to government bonds. These policies contributed to an ever-growing

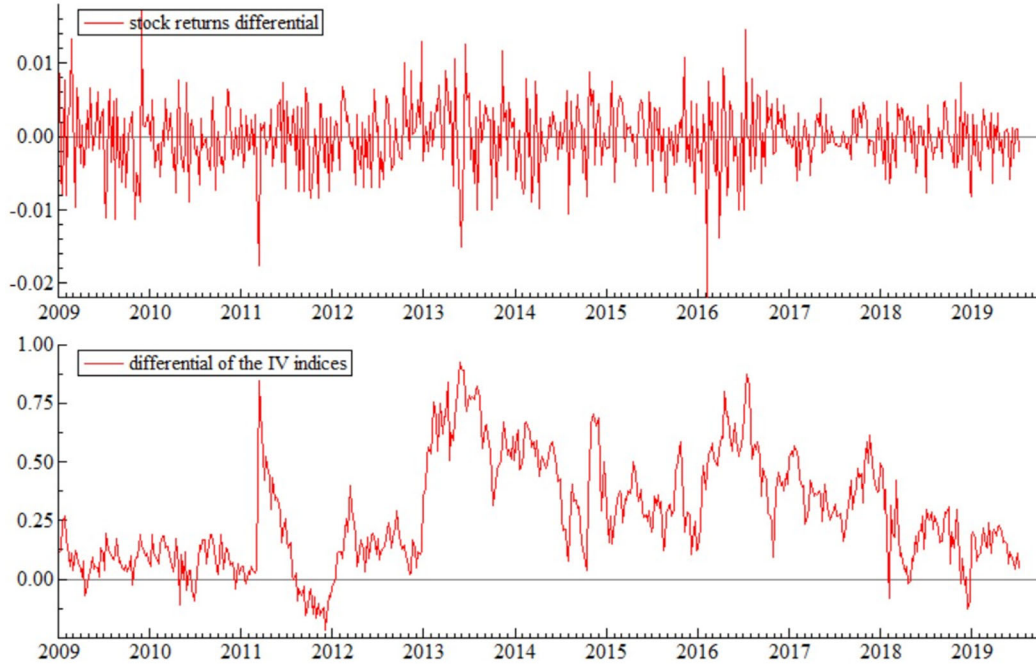


Figure 1 The Japanese and the US stock returns differential (upper panel) and the implied volatility differential of the Japanese and the US stock markets (lower panel)

expansion of the reserves held at the BoJ and its current account outstanding balance.¹⁴

We use the growth rate of the commercial banks' reserves held with the BoJ and the growth of the excess reserves maintained with the Federal Reserve, which are calculated as $(R_{l,t})$ using Equation (1) with l being the reserves held with the BoJ or the Federal Reserve and $P_{l,t}$ their values at time t . The differential of growth in reserves is computed as $Diff_ALRES = R_{RES(JP)} - R_{RES(US)}$. The Japanese and the US data are obtained from CEIC and the Board of Governors of the Federal Reserve System at weekly and fortnightly frequencies, respectively. We conduct our analysis at the weekly frequency to be consistent with the rapid responses of financial variables to changes and events. To match the frequency of the US reserves, we use the Litterman method (1983)¹⁵ of temporal disaggregation using money supply (money zero maturity) as the indicator variable.

Both the IV differential and stock returns differential include extreme values in March 2011, corresponding to the highest uncertainty in the Japanese stock market at the time of the Tsunami

¹⁴ for more details about the Japanese QE, CME and QQE refer to Ueda (2012), Harada and Okimoto (2019) among others.

¹⁵ Litterman's method of temporal disaggregation for deriving high-frequency from low-frequency time series. This method is a variant of Chow and Lin (1971) method which interpolates low-frequency series by relating it to a reference high-frequency series based on a regression.

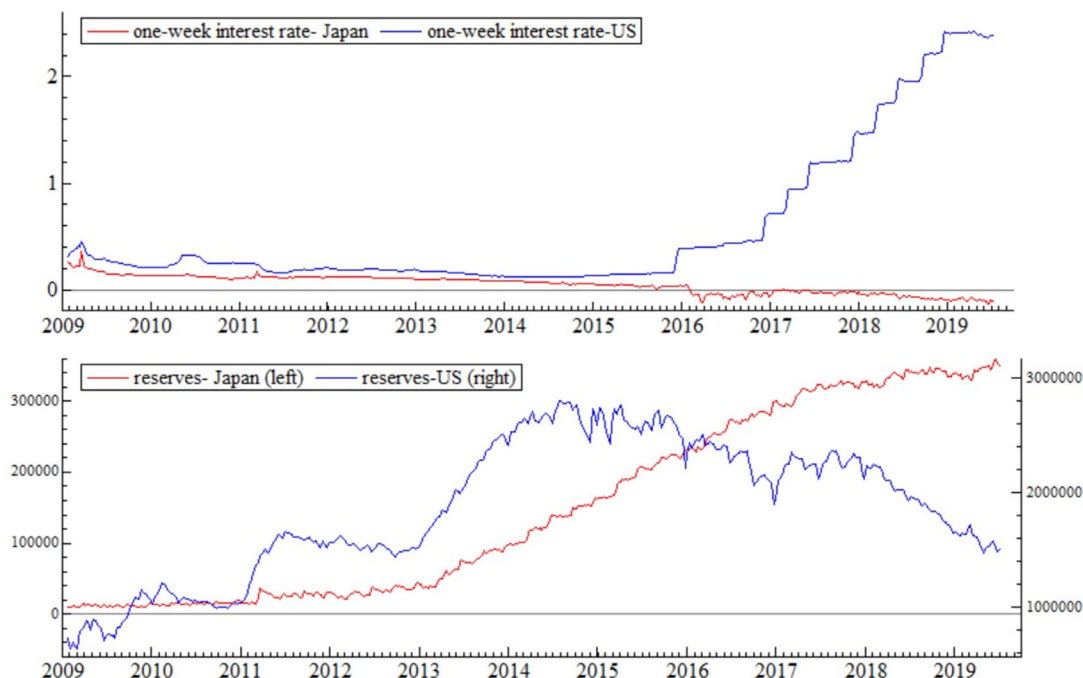


Figure 2 One-week interest rates and reserves

Notes: one-week interest rates of Japan and the US in the upper panel and commercial banks' reserves held with the Japanese and the US central banks in the lower panel (in billions of JPY and millions of USD, respectively).

in Japan, respectively. Signals of the weakened Chinese manufacturing figures bundled with the tapering news from the US and spikes in the Japanese government yields caused a heightened uncertainty in the Japanese stock market in late May 2013, which in turn lead to high values for both the IV and stock returns differentials. The extreme values of the IV and stock returns differentials in early 2016 correspond to the introduction of negative interest rate policy (on commercial banks' accounts at the BoJ) in Japan, which was designed to encourage more lending by banks.

Elevated uncertainty in global markets in June 2016 encouraged more purchases of ETFs and the US dollar lending by the BoJ in July 2016. Simultaneously, there were concerns about the deferral of the consumption tax hike in Japan, which contributed to more uncertainty in the Japanese market. In January and February 2018, the fear of an increase in the US interest rates and overdue market corrections caused a sharp fall in major US stock indices and high uncertainty in the US stock market, leading to a negative IV and stock returns differentials. The last extreme value included in our sample corresponds to a negative IV and stock returns differentials when a combination of negative signals contributed to bearish expectations among investors in the US. These negative signals include the tension between the US and China over trade tariffs, slow

Table 1 Descriptive statistics (sample: January 2009 to July of 2019)

	$\Delta\text{LJPY/USD}$	$\text{diff_}\Delta\text{LRES}$	Diff_SR	Diff_IV
Mean	0.00007	0.00547	-0.00009	0.01067
Standard deviation	0.00272	0.07069	0.00460	0.18860
Skewness	-0.01475	1.39790	-0.26056	0.45153
Excess kurtosis	0.74451	7.69450	1.42010	0.40342
Minimum	-0.00996	-0.30477	-0.02190	-0.48909
Maximum	0.00921	0.48708	0.01708	0.74229
Jarque-Bera Normality	12.676***	22.337***	52.251***	1530.3***
autocorrelation	30.826	782.51***	40.565	2688.1***
ADF (1979)	-14.0205***	-4.64369***	-15.1215***	-16.9121***
KPSS (1992)	0.128653	1.10976	0.0721538	0.014626

*** Significant at the 1% level.

- $\Delta\text{LJPY/USD}$: returns of the Japanese yen vis-à-vis the US dollar, Diff_SR : the differential between the Japanese and the US stock returns ($\text{Diff_SR}_t = R_{\text{NIK},t} - R_{\text{S\&p500},t}$), diff-IV : the differential between the logarithms of the VXJ and the VIX (LVXJ-LVIX), $\text{diff_}\Delta\text{LRES}$: differential of the changes in the reserves held with the BOJ and the Federal Reserve ($\text{Diff_}\Delta\text{LRES} = R_{\text{RES(JP)}} - R_{\text{RES(US)}}$).

economic growth at the global level, and Brexit.¹⁶

Table 1 **Error! Reference source not found.** shows the descriptive statistics and stationarity results of the exchange rate returns, stock returns differentials, the IV differential, and the reserves growth differential. All variables have non-normal distributions. Besides, the IV differential and the differential of reserves growth suffer from serial autocorrelation. According to the unit-root, ADF (1979), and stationarity, KPSS (1992), tests all variables are stationary.

The use of returns or differenced data may cause a concern, that is, possible long-run relationships between the exchange rate and the levels of explanatory variables are overlooked. Among the three differential variables, the IV differential is computed using the levels of the IV indices and is already stationary. Therefore, a long-run relationship between this variable and the level of the JPY/USD exchange rate is ruled out. The stock returns differential, and the reserves growth differential are computed using first differences of the variables because this approach is intuitively acceptable and theoretically supported. However, to ensure that we do not overlook the long-run aspect of the analysis, we try computing these two differential variables using levels of their constituent components (i.e., logarithms of the stock prices and logarithms of the level of reserves). The results of stationarity and cointegration tests show that the differential of reserves computed using log levels of reserves is stationary and the differential of log stock prices is non-stationary. However, even the latter does not form any long-run relationship with the exchange rate (as reported in Table A 1 in the Appendix).

¹⁶ for more details see Arbatli et al. (2017), Le Moign et al. (2018).

2.2 Methodology

The determinants of exchange rates can vary depending on the economic situation and implemented economic policies, investors' behavior, and investing technologies, among other factors. For instance, when the interest rates differential is zero or very close to zero, it may not play an essential role in determining the dynamics of exchange rates, leaving room for a temporary effect of other variables. Therefore, it is advisable to use a nonlinear model to capture this time-varying exchange rate dynamics. Accordingly, we use the Markov-switching model of Hamilton (1989), which, in contrast to structural break tests, benefits from the possibility of regime recurrence (Hamilton, 2016).

To analyze the determinants of the JPY/USD exchange rate returns, we use the following general specification:

$$\Delta e_t = \sum_{i=1}^p \alpha_i(s_t) \Delta e_{t-i} + \sum_j \sum_{k=1}^q \beta_{j,k}(s_t) \text{diff}_{j,t-k} + \sigma(s_t) \varepsilon_t \quad (2)$$

where Δe_t , the JPY/USD exchange rate return, is regressed on its 1 to p lagged values (Δe_{t-i}). The matrix $\text{diff}_{j,t-k}$ contains the contemporaneous and lagged values of the three differential variables with j indicating stock returns (SR), implied volatility (IV) or reserves growth ($\Delta LRES$), and k the number of lags varying from 1 to q . The error term ε_t follows a Gaussian white noise process with covariance matrix Σ .

In this equation, s_t is an unobservable variable that specifies the state at each time. We allow all the parameters in this model to switch state. Therefore, $\alpha_i(s_t)$ s are the state-dependent coefficients of the p autoregressive lags of exchange rate returns. Similarly, $\beta_{j,k}(s_t)$ s are the state-dependent coefficients of the stock returns differential, IV differential, and the reserves growth differential. $\sigma(s_t)$ is the state-dependent variance.

The state variable (s_t) follows a first-order Markov chain, implying the dependence of the current value of s_t only on its immediately preceding value. According to our model specification, each observation is designated to a specific state, allowing us to obtain smoothed transition probabilities from one state to the other and the probability of persistence of each state. Estimation of the model parameters is done using the sequential quadratic programming algorithm of Lawrence and Tits (2001) along with a pre-estimation with the Expected Maximization (EM) algorithm of Dempster, laid and Rubin (1977).

In this empirical analysis, we choose the number of regimes based on statistical tests. To determine the best number of regimes and the best number of lags for the dependent and independent variables, we follow a two-step approach. The first step consists of determining the number of lags to include in Equation (2). To do that, we estimate a vector autoregressive model in a linear

framework as follows:

$$Y_t = \sum_{l=1}^m \Pi_l Y_{t-l} + \xi_t \quad (3)$$

in which Y is a vector of all our four variables [$diff_IV$, $diff_ALRES$, $diff_SR$, $\Delta LJPY/USD$] with $l=1$ to 12. We compare the estimated models with 1 to 12 lags using different information criteria, e.g., the Schwarz (SC), Akaike (AIC), and Hannan and Quinn (HQ) information criteria and we choose the model which yields the lowest information criteria. We use the Granger causality test to ensure the one-way causality from the independent variables to the JPY/USD returns. In the case of a two way-causality, the time t value of the independent variable can be neglected to avoid a simultaneity issue.

A prerequisite to the MS estimation of Equation (2) is to test the outperformance of a Markov-switching model over a linear model. We benefit from the optimal test of Markov-switching by Carrasco et al. (2014), which only requires the estimation of the Markov-switching model under the null hypothesis of constant parameters. We compute the critical values from 500 iterations for a model that allows switching intercept and variance. Conditional on the rejection of the linear model by this test, we proceed to the second step using the optimal lag suggested by the information criteria from the preceding step.

We allow all the parameters to be regime-dependent and estimate five models with 1 (linear model) to 4 regimes. We compute the Markov-Switching Criterion (MSC), developed by Smith et al. (2006). This criterion is based on the Kullback–Leibler (KL) divergence. As opposed to AIC, SC and HQ, which mislead users to choose an inaccurate number of regimes (Psaradakis and Spagnolo, 2003; Smith et al., 2006), MSC is shown to be efficient across different sample sizes and with noisy data (Smith et al., 2006). This criterion uses full-sample smoothed probabilities in order to balance the fit of the model with its parsimony. The criterion is computed as:

$$MSC = -2L + \sum_{r=1}^S \frac{\hat{\tau}_r (\hat{\tau}_r + S\eta)}{\hat{\tau}_r - S\eta - 2} \quad (4)$$

where L is the log-likelihood of the estimated model, S is the number of regimes, and η is the number of regressors. $\hat{\tau}_r$ is defined as the sum of smoothed probabilities of being in r^{th} regime computed using full-sample smoothed probabilities. The model which yields the minimum MSC is chosen as the optimal number of Markov-switching regimes. After selecting the optimal number of lags and regimes, we test whether the linearity of each of the parameters can help improve the fit of the model according to SC.

3 Determinants of the JPY/USD Movements

3.1 Markov-switching Model Estimation

Following the first step of our approach, we choose a model with two lags for the dependent and independent variables. Table A 2 in the Appendix shows that all the three criteria choose a model with two lags for the sample from 2009 to 2019.¹⁷ According to the Granger causality test results in Table A 3 in the Appendix, the only variables that are not weakly exogenous are the exchange rate movements, and the stock returns differential. The exchange rate movements can influence the stock returns differential. Therefore, in our nonlinear estimation of Equation (2), we omit the time t value of the stock returns differential and only allow its lagged values in the model as explanatory variables. In the second step, MSC suggests a model with two regimes (Table A 5 in the Appendix). As shown in Table 2, Carrasco et al. (2014)'s test of Markov-switching versus a linear model rejects the null of linearity. Carrasco et al. (2014)'s test results are also confirmed by the MSC, which shows that the outperformance of a linear model is rejected.

According to our systematic model comparison using SC, we choose a model in which only four parameters are regime-dependent (Table 3). In this model, the constant term is not significant. Therefore, none of the regimes can be designated to a specific direction of either appreciation or depreciation of the JPY vis-a-vis the USD. The first regime is the dominant and the most persistent (see Table A 6). The variance of the error terms is the parameter that usually governs the regime changes. Therefore, the first and second regimes are the low- and high-volatility regimes, respectively. Apart from the variance of the error terms, only the second autoregressive lag, the second lag of the IV differential, and the first lag of the reserves growth differential are regime-dependent, according to SC.¹⁸ The coefficients of the first and second autoregressive lags are significant with opposite signs, therefore contributing to the JPY/USD appreciation at a one-week horizon and its depreciation at a two-week horizon, respectively.

In accordance with our conjecture, we find a non-switching, positive, and significant relationship between the JPY/USD exchange rate returns and the contemporaneous value of the IV differential during the whole sample. This shows that when volatility is higher in the Japanese stock market in comparison with the US stock market, investors move a part of their portfolio to the safer market (the US market) and induce a depreciation of the Japanese yen vis-à-vis the US dollar and vice versa. This is in line with the findings of Londono and Zhou (2017) and Aloosh (2014). However, it is obtained in a much less complicated framework and taking a two-country relative perspective.

This relationship reverses sign in a two-week horizon. In other words, the coefficient of the second lag of the IV differential is significant and negative in both regimes, with a stronger appreciating effect on the exchange rate during the high-volatility (second) regime. This may be a sign that investors move their capital to the market that has already passed an uncertain period, hoping that

¹⁷ For the sake of comparison between the linear and nonlinear estimations (although the models are not identical), we provide the generalized impulse responses of the VAR estimation in the Appendix (see Figure A 1). The impulse responses show that the exchange rates only react to a shock to the stock returns differential and are not influenced by the shocks to the IV differential and reserves growth differential.

¹⁸ The AIC also suggests a model with minor differences.

Table 2 Linearity vs. Markov-switching test of Carrasco et al. (2014) (sample: 2009/09/26-2019/07/08)

Dependent variable	supTS	expTS
Δ LJPY/USD	12.689 [0.000]	127.181 [0.000]

- Numbers in squared brackets are p-values.
- Critical values are computed from 500 iterations for a model with switching mean and variance.
- SupTS shows a sup-type test statistic used by Davies (1987), and expTS shows an exponential-type test statistic suggested by Andrews and Ploberger (1994).

they can benefit from a “buy the dips” strategy.

The JPY/USD returns have a significantly positive and non-switching relationship with the stock returns differential at a one-week horizon. The positive sign of this coefficient is consistent with UEP, meaning that relatively higher stock returns in Japan lead to a depreciation of the JPY vis-à-vis the USD at a one-week horizon. The coefficient of the second lag is, however, not significant. Therefore, as expected from the fast reactions of investors, the effect of the stock returns differential is short-lived. The UEP-consistent finding at a one-week horizon is unique to this study. The key to this finding is the choice of the sample with regard to the specificities of the two corresponding countries, which was neglected by previous studies.

Finally, the reserves growth differential and the JPY/USD exchange rate returns are not contemporaneously related; however, with one and two weeks of lag, their relationship is significant. The effect with a one-week lag is regime-dependent. During the low-volatility (high-volatility) regime, relatively higher (lower) Japanese reserves growth leads to a stronger (weaker) JPY against the USD. Regardless of how the reserves growth differential affects the exchange rate returns in a one-week horizon, the effect with a 2-week lag contributes completely to a depreciation of the JPY vis-à-vis the USD. The depreciation effect is much more expected in the literature. The appreciation of the JPY against the USD following reinforcement of UMP in Japan has been a source of ambiguity in previous studies such as Ueda (2012) (for a sample from 1999 to 2011).¹⁹

One piece of conjecture about the channel through which the reserves growth differential occasionally leads to an appreciation of JPY against the USD is that the Japanese UMP relatively succeeded in guiding investments toward more risky assets inside Japan at a one-week horizon. This could have taken place either by incentivizing investors to rebalance their portfolio toward more risky Japanese assets or by the BoJ’s direct purchases of ETFs since December 2011 under the CME policy.²⁰

¹⁹ In contrast to the results of the linear VAR model (presented in the Appendix, Figure A 1), the Markov-switching model shows that the movements of the JPY/USD are also influenced by the IV differential and the reserves growth differential.

²⁰ A more-than-two-country framework can be helpful to shed light on the direction of outflows from the US and Japan and to show which country has been serving more as the funding carry trade currency.

Table 3 Estimated Markov-switching model (sample: 26/09/2009-08/07/2019)

	Regime 1	Regime 2
Constant		0.0001 (0.0001)
$\Delta LJPY/USD$ (-1)		-0.1191** (0.0480)
$\Delta LJPY/USD$ (-2)	0.1543** (0.0621)	-0.1037 (0.0768)
Diff_SR (-1)		0.0948*** (0.0273)
Diff_SR (-2)		-0.0278 (0.0264)
Diff_IV		0.0048*** (0.0012)
Diff_IV (-1)		-0.0019 (0.0015)
Diff_IV (-2)	-0.0024* (0.0013)	-0.0037** (0.0017)
Diff_ALRES		0.0012 (0.0017)
Diff_ALRES (-1)	-0.0060*** (0.0022)	0.0084*** (0.0029)
Diff_ALRES (-2)		0.0036** (0.0017)
Variance	0.0020*** (0.0001)	0.0034*** (0.0002)
Prob. of per.	0.9865	0.9706
Normality test	0.64646 [0.7238]	
ARCH 1-1 test	2.3781 [0.1236]	
Portmanteau (23)	11.427 [0.9681]	

*** Significant at the 1% level, ** Significant at the 5% level, * Significant at the 10% level

- $\Delta LJPY/USD$: returns of the Japanese yen vis-à-vis the US dollar, diff_SR: the differential between the Japanese and the US stock market returns, diff_IV: the differential between the log transformations of VXJ and VIX, diff_ALRES: the differential of the Japanese and the US reserves growth.
- Robust standard errors are shown in parenthesis and p-values in squared brackets.
- Numbers centrally aligned between the regimes show the constancy (nonlinearity) of the respective coefficients.

In contrast, the literature enlightens us more about the channel through which the reserves growth differential leads to a depreciation of the JPY vis-à-vis the USD. During the high-volatility periods, reinforced Japanese UMP contributes to the relatively higher reserves growth in Japan, which as a

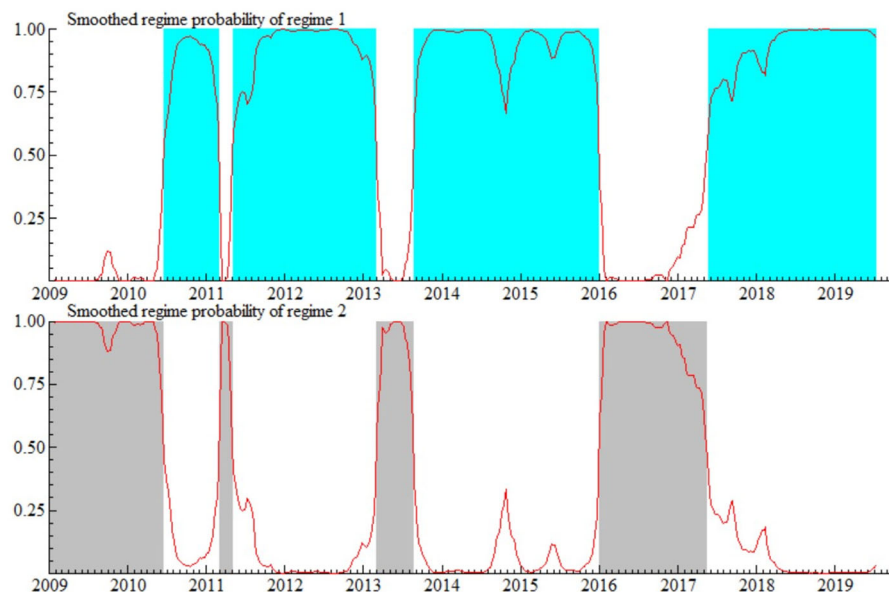


Figure 3 Smoothed regime probabilities (2009-2019)

result of low yields of investment in Japan, leads to more carry-induced capital outflows compared to the US. Thus, the JPY depreciates against the USD at a one-week horizon. The same channel functions in a two-week horizon. Nevertheless, the ultimate effect of the reserves growth differential on the exchange rate is the depreciation of the currency of the country with higher reserves growth. This is consistent with the literature but in a two-country relative framework.

To ensure about the explanatory power of our differential variables and the outperformance of our selected model, we ran a comparison between constrained models by sequentially omitting one of the explanatory variables. The results in Table A 6 show that AIC always favors our selected model. Also, all three likelihood ratio tests reject the exclusion of our differential variables. So, our selected model outperforms each of the constrained models, and the inclusion of the IV differential statistically significantly improves the explanatory power of the model.

3.2 Portfolio Rebalancing through Capital Flows

Ideally, the channel through which the differential variables affect the exchange rate movements, namely capital flows, should be analyzed in a similar Markov-switching framework. However, such analysis is not possible in this study. On the one hand, it is because of the lack of freely available capital flows data at a high-frequency.²¹ On the other hand, it is because analysis at a low-frequency requires averaging the high-frequency data, leading to the disappearance of some

²¹ There are at least two sources of high-frequency data on capital flows, none of which is accessible freely. EPFR dataset contains weekly portfolio investment flows at mutual funds level. IIF also provides net private capital inflows at a daily frequency.

of the rapid market reactions to the differential variables. Against this limitation, we try to have a close look at the events causing high volatility over the sample and noting the direction of capital flows inducing changes in the JPY/USD exchange rate. To do so, we rely on monthly bilateral data on the Japanese-US capital flows provided by the Treasury International Capital (TIC) system disaggregated based on the type of the capital flows (such as stocks, bonds) and also quarterly international portfolio investment flows data provided by the IMF (See Figure 4).

One of the periods of excessive foreign exchange market volatility prevails from the beginning of the sample in 2009 until mid-2010, during which financial markets were still turbulent after the global financial crisis (see Figure 4 and the regime classifications in Table A 5). The upper panel of Figure 4 shows that during this period, an increasing (decreasing) net-net equity flows (defined as the net equity inflows into Japan minus the net equity inflows into the US) are associated with an appreciation (depreciation) of the JPY against the USD.

The short period of high volatility from March to May 2011 was caused by the earthquake and the heightened worries of the nuclear crisis in Japan. Instability in the Japanese stock market soared, and the JPY depreciated vis-à-vis major currencies. The disorderly foreign exchange market was very soon stabilized thanks to the concerted foreign exchange market intervention by G7 countries. The same negative relationship exists between the net-net equity flows and the exchange rate returns (Figure 4).

The next period of excess foreign exchange market volatility, which started in March 2013 and continued for around five months, was provoked by the implementation of a very intense monetary stimulus in Japan. The purpose of the stimulus was to defeat Japan's continued deflation and to achieve a targeted inflation rate of two percent in the next two years. Subsequently, the BoJ's balance sheet experienced a rapid expansion, the Japanese stock market rallied, and the yen depreciated. This monetary policy change was followed by a massive quantitative easing program in April 2013, in response to which financial market uncertainty increased, the JPY experienced further depreciation, and the stock market surged. However, skepticism about Abe's expansionary policies coupled with some international news on the US tapering in May and June 2013 and China's slowing growth caused an escalation of uncertainty in stock markets. Stock markets were hit both in Japan and the US, with a more striking effect in the former. The sudden drop of the net-net equity flows into Japan during this period (the third shaded area in Figure 4) is associated with higher uncertainty in the Japanese market and depreciation of this country's currency, consistent with our hypothesis.

The next series of events giving rise to heightened volatility in the JPY/USD exchange rate and uncertainty in different countries started in late 2015. On the one hand, in December 2015, US interest rates began to increase, accompanied by signals of further gradual increases during the following years. On the other hand, the BoJ adopted a negative interest rate policy in late January 2016 to stimulate investment and borrowing as well as boosting inflation and weakening the

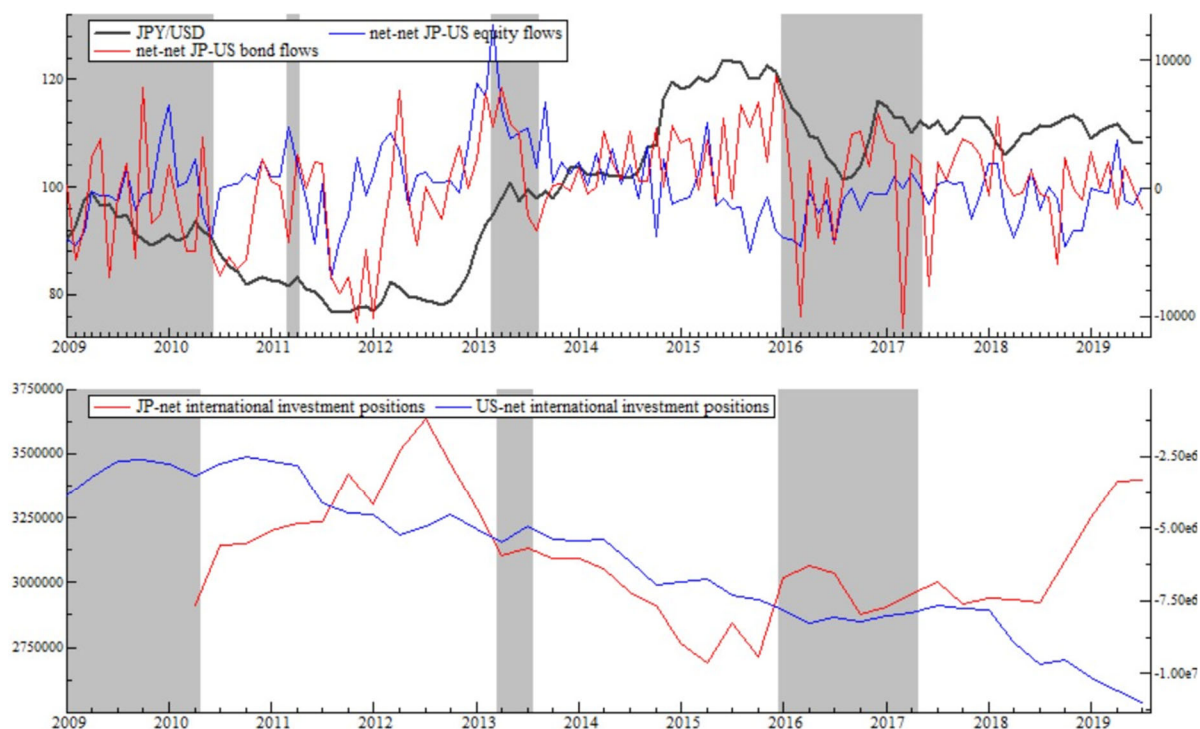


Figure 4 Capital flows and exchange rate

Notes: upper panel shows the JPY/USD exchange rate in black on the left axis, and monthly net-net Japan-US bilateral equity flows in blue, net-net Japan-US bilateral bond flows in red, on the right axis. Lower panel shows quarterly net international investment inflows to Japan in red and net international investment inflows to the US in blue. Shaded areas are classified in the second regime by our selected model (the shaded area in March 2011 disappears in the lower panel due to its short duration and a lower frequency of the data).

currency. In both cases, uncertainty around the consequences of the moves caused plunges in major, and sometimes in emerging markets. As a result, flight to safety by international investors and repatriation of Japanese overseas investments caused reinforcement of the safe-haven status of the JPY, and the Japanese yen appreciated accordingly. Similarly, later events such as the news on China's slowdown signals in February, and the Brexit referendum in June both contributed to a strong JPY vis-à-vis the USD. The presidential election in the US in November and an increase in the US target rate in December both led to surges in the value of the USD after long periods of high financial market instability and the JPY depreciation.

In this period of high volatility, in contrast to the previous three periods, a positive relationship exists between the net-net equity flows and the exchange rate returns. Therefore, at the first look, it might seem that relatively higher volatility in Japan does not lead to the depreciation of the JPY. But, given the specific status of the Japanese yen and the US dollar as safe-haven currencies, it may not be enough to only take into account the Japanese-US bilateral equity flows. As shown in the lower panel of Figure 4, during this period, gross inflows to Japan increased until

mid-2016 and decreased afterward, while the opposite happens to the gross inflows to the US. Therefore, the JPY appreciates until midway in the period and then depreciates against the USD.

4 Conclusion

In this study, we explored for the first time the relationship between relative uncertainties in two countries' stock markets and their corresponding exchange rate returns. We also examined the explanatory power of some of the previously-proposed determinants of the exchange rate dynamics, namely the stock returns differential and the differential of the growth of unconventional monetary policy measures.

Using a Markov-switching model and focusing on the JPY/USD exchange rate from 2009 to 2019, we show that our proposed determinant, the IV differential has a significant relationship with the exchange rate dynamics in our sample. Moreover, we document that the stock returns differential is an essential non-switching determinant of the JPY/USD exchange rate returns as consistent with UEP (Cappiello and De Santis, 2005; Hau and Rey, 2006). The differential of the relative increase in UMP of the two corresponding countries also plays a crucial nonlinear role in explaining the JPY/USD dynamics with one and two weeks of lag. Our unique findings emphasize the importance of the choice of sample based on corresponding countries' monetary stances.

A serious examination of the role of capital flows, as the transmission mechanism of the effects of the IV differential, stock returns differential, and reserves growth differential on exchange rate remains as a future extension of this study. Also, a comparison of findings using alternative uncertainty measures such as the EPU index can be very informative.

REFERENCES

- Adler, M., Dumas, B., 1983. International portfolio choice and corporation finance: A synthesis. *J. Finance* 38, 925–984. <https://doi.org/10.1111/j.1540-6261.1983.tb02511.x>
- Aloosh, A., 2014. Global variance risk premium and forex return predictability (No. 59931), Munich Personal RePEc Archive. University Library of Munich, Germany.
- Andrews, D.W.K., Ploberger, W., 1994. Optimal tests when a nuisance parameter is present only under the alternative. *Econometrica* 62, 1383. <https://doi.org/10.2307/2951753>
- Arbatli, E., Davis, S., Ito, A., Miake, N., Saito, I., 2017. Policy uncertainty in Japan. IMF Work. Pap. 17, 1. <https://doi.org/10.5089/9781484300671.001>
- Bachmann, R., Elstner, S., Sims, E.R., 2013. Uncertainty and economic activity: Evidence from business survey data. *Am. Econ. J. Macroecon.* 5, 217–249. <https://doi.org/10.1257/mac.5.2.217>
- Badshah, I.U., Frijns, B., Tourani-Rad, A., 2013. Contemporaneous spill-over among equity, gold, and exchange rate implied volatility indices. *J. Futur. Mark.* 33, 555–572.

<https://doi.org/10.1002/fut.21600>

Baele, L., Bekaert, G., Inghelbrecht, K., Wei, M., 2018. Flights to safety. SSRN Electron. J. <https://doi.org/10.2139/ssrn.3204192>

Bai, J., Perron, P., 2003. Computation and analysis of multiple structural change models. *J. Appl. Econom.* 18, 1–22. <https://doi.org/10.1002/jae.659>

Baker, S.R., Bloom, N., Davis, S.J., 2016. Measuring economic policy uncertainty. *Q. J. Econ.* 131, 0–52. <https://doi.org/10.1093/qje/qjw024.Advance>

Balakrishnan, R., Goncalves, F.M., 2008. Financial flows from the United States to latin Amercia: Basic patterns, causes, and implications, in: Mühleisen, M., Roache, S.K., Zettelmeyer, J. (Eds.), *Who's Driving Whom? Analyzing External and Intra-Regional Linkages in the Americas*. International Monetary Fund, Washington, DC. <https://doi.org/10.5089/9781589067882.087>

Balakrishnan, R., Laseen, S., Pescatori, A., 2016. U.S. dollar dynamics: How important are policy divergence and FX risk premiums? IMF Work. Pap. 16, 1. <https://doi.org/10.5089/9781498348416.001>

Bank for International Settlements, 2019. Triennial Central Bank Survey of Foreign Exchange Turnover in April 2019.

Bauer, M.D., Rudebusch, G.D., 2014. The signaling channel for Federal Reserve bond purchases. *Int. J. Cent. Bank.* 10, 233–289. <https://doi.org/10.24148/wp2011-21>

Bekaert, G., Hoerova, M., Lo Duca, M., Adrian, T., Amisano, G., DeJong, D., Mackowiak, B., Smets, F., Valentim, J., 2013. Risk, uncertainty and monetary policy. *J. Monet. Econ.* 60, 771–788. <https://doi.org/10.1016/j.jmoneco.2013.06.003>

Bloom, N., 2014. Fluctuations in Uncertainty. *J. Econ. Perspect.* 28, 153–176. <https://doi.org/10.1257/jep.28.2.153>

Bollerslev, T., Tauchen, G., Zhou, H., 2009. Expected stock returns and variance risk premia. *Rev. Financ. Stud.* 22, 4463–4492. <https://doi.org/10.1093/rfs/hhp008>

Boscaljon, B., Clark, J., 2013. Do large shocks in VIX signal a flight-to-safety in the gold market? *J. Appl. Financ.* 23, 120–131.

Brunnermeier, M.K., Pedersen, L.H., 2009. Market liquidity and funding liquidity. *Rev. Financ. Stud.* 22, 2201–2238. <https://doi.org/10.1093/rfs/hhn098>

Caballero, R.J., Krishnamurthy, A., 2008. Collective risk management in a flight to quality episode. *J. Finance* 63, 2195–2230. <https://doi.org/10.1111/j.1540-6261.2008.01394.x>

Caporale, G.M., Karanasos, M., Yfanti, S., 2019. Macro-financial linkages in the high-frequency

domain: The effects of uncertainty on realized volatility (No. 8000), Social Science Research Network, CESifo Working Paper. Munich Society for the Promotion of Economic Research-CESifo.

Cappiello, L., De Santis, R.A., 2007. The uncovered return condition (No. 812), Working Paper Series. European Central Bank, Frankfurt.

Cappiello, L., De Santis, R.A., 2005. Explaining exchange rate dynamics: The uncovered equity return parity condition (No. 529), Working Paper Series. European Central Bank.

Carrasco, M., Hu, L., Ploberger, W., 2014. Optimal test for Markov switching parameters. *Econometrica* 82, 765–784. <https://doi.org/10.3982/ECTA8609>

Carriero, A., Clark, T.E., Marcellino, M., 2018. Measuring uncertainty and its impact on the economy. *Rev. Econ. Stat.* 100, 799–815. https://doi.org/10.1162/rest_a_00693

Cenedese, G., Payne, R., Sarno, L., Valente, G., 2016. What do stock markets tell us about exchange rates? *Rev. Financ.*, DP 20, 1045–1080. <https://doi.org/10.1093/rof/rfv032>

Chauvet, M., Senyuz, Z., Yoldas, E., 2015. What does financial volatility tell us about macroeconomic fluctuations? *J. Econ. Dyn. Control* 52, 340–360. <https://doi.org/10.1016/j.jedc.2015.01.002>

Cho, J.W., Choi, J.H., Kim, T., Kim, W., 2016. Flight-to-quality and correlation between currency and stock returns. *J. Bank. Financ.* 62, 191–212. <https://doi.org/10.1016/j.jbankfin.2014.09.003>

Chow, G.C., Lin, A., 1971. Best linear unbiased interpolation, distribution, and extrapolation of time series by related series. *Rev. Econ. Stat.* 53, 372. <https://doi.org/10.2307/1928739>

Curcuro, S.E., Thomas, C.P., Warnock, F.E., Wongswan, J., 2014. Uncovered equity parity and rebalancing in international portfolios. *J. Int. Money Financ.* 47, 86–99. <https://doi.org/10.1016/j.jimonfin.2014.04.009>

Davies, R.B., 1987. Hypothesis testing when a nuisance parameter is present only under the alternative. *Biometrika* 74, 33–43. <https://doi.org/10.1093/biomet/74.1.33>

Della Corte, P., Ramadorai, T., Sarno, L., 2016. Volatility risk premia and exchange rate predictability. *J. financ. econ.* 120, 21–40. <https://doi.org/10.1016/j.jfineco.2016.02.015>

Dempster, A.A.P., Laird, N.M., Rubin, D.B., 1977. Maximum likelihood from incomplete data via the EM algorithm. *J. R. Stat. Soc. Ser. B* 39, 1–38.

Dickey, D.A., Fuller, W.A., 1979. Distribution of the estimators for autoregressive time series with a unit root. *J. Am. Stat. Assoc.* 74, 427–431. <https://doi.org/10.1080/01621459.1979.10482531>

Ferrara, L., Lhuissier, S., Tripier, F., 2017. Uncertainty fluctuations: Measures, effects and

macroeconomic policy challenges (No. 20), Policy Brief. CEPII. https://doi.org/10.1007/978-3-319-79075-6_9

Ferrara, L., Marsilli, C., Ortega, J.P., 2014. Forecasting growth during the Great Recession: Is financial volatility the missing ingredient? *Econ. Model.* 36, 44–50. <https://doi.org/10.1016/j.econmod.2013.08.042>

Fratzscher, M., 2012. Capital flows, push versus pull factors and the global financial crisis. *J. Int. Econ.* 88, 341–356. <https://doi.org/10.1016/j.jinteco.2012.05.003>

Fratzscher, M., Lo Duca, M., Straub, R., 2018. On the international spillovers of US quantitative easing. *Econ. J.* 128, 330–377. <https://doi.org/10.1111/ecoj.12435>

Fuertes, A.-M., Phylaktis, K., Yan, C., 2019. Uncovered equity “disparity” in emerging markets. *J. Int. Money Financ.* 98, 102066. <https://doi.org/10.1016/j.jimonfin.2019.102066>

Gagnon, J., Raskin, M., Remache, J., Sack, B., 2011. The financial market effects of the federal reserve’s large-scale asset purchases. *Int. J. Cent. Bank.* 7, 3–43.

Gilchrist, S., Sim, J., Zakrajšek, E., 2014. Uncertainty, financial frictions, and investment dynamics, Antimicrobial Agents and Chemotherapy. Cambridge, MA. <https://doi.org/10.3386/w20038>

Glick, R., Leduc, S., 2012. Central bank announcements of asset purchases and the impact on global financial and commodity markets. *J. Int. Money Financ.* 31, 2078–2101. <https://doi.org/10.1016/j.jimonfin.2012.05.009>

Hamilton, J.D., 1989. A new approach to the economic analysis of nonstationary time series and the business cycle. *Econometrica* 57, 357. <https://doi.org/10.2307/1912559>

Harada, K., Okimoto, T., 2019. The BOJ’s ETF purchases and its effects on Nikkei 225 stocks (No. 19- E- 014), Discussion Paper Series. RIETI.

Hau, H., Rey, H., 2008. Global portfolio rebalancing under the microscope (No. 14165), NBER Working Paper Series. National Bureau of Economic Research, Cambridge, MA. <https://doi.org/10.3386/w14165>

Hau, H., Rey, H., 2006. Exchange rates, equity prices, and capital flows. *Rev. Financ. Stud.* 19, 273–317. <https://doi.org/10.1093/rfs/hhj008>

Jo, S., Sekkel, R., 2019. Macroeconomic uncertainty through the lens of professional forecasters. *J. Bus. Econ. Stat.* 37, 436–446. <https://doi.org/10.1080/07350015.2017.1356729>

Joëts, M., Mignon, V., Razafindrabe, T., 2017. Does the volatility of commodity prices reflect macroeconomic uncertainty? *Energy Econ.* 68, 313–326. <https://doi.org/10.1016/j.eneco.2017.09.017>

- Jubinski, D., Lipton, A., 2013. VIX, gold, silver, and oil: How do commodities react to financial market volatility? *J. Account. Financ.* 13, 70–88.
- Jurado, K., Ludvigson, S.C., Ng, S., 2015. Measuring uncertainty. *Am. Econ. Rev.* 105, 1177–1216. <https://doi.org/10.1257/aer.20131193>
- Kenourgios, D., Papadamou, S., Dimitriou, D., 2015. On quantitative easing and high frequency exchange rate dynamics. *Res. Int. Bus. Financ.* 34, 110–125. <https://doi.org/10.1016/j.ribaf.2015.01.003>
- Kim, H., 2011. The risk adjusted uncovered equity parity. *J. Int. Money Financ.* 30, 1491–1505. <https://doi.org/10.1016/j.jimonfin.2011.06.020>
- Knight, F.H., 1921. Risk, uncertainty and profit, Houghton Mifflin Company. Houghton Mifflin Company, Boston and New York. <https://doi.org/10.1017/CBO9781107415324.004>
- Krolzig, H.-M., 2003. General-to-specific model selection procedures for structural vector autoregressions. *Oxf. Bull. Econ. Stat.* 65, 769–801. <https://doi.org/10.1046/j.0305-9049.2003.00088.x>
- Kwiatkowski, D., Phillips, P.C.B., Schmidt, P., Shin, Y., 1992. Testing the null hypothesis of stationarity against the alternative of a unit root. *J. Econom.* 54, 159–178. [https://doi.org/10.1016/0304-4076\(92\)90104-Y](https://doi.org/10.1016/0304-4076(92)90104-Y)
- Le Moign, C., Raillon, F., 2018. Heightened volatility in early February 2018: The impact of VIX products. *Autorité des Marchés Financiers*.
- Litterman, R.B., 1983. A random walk, Markov model for the distribution of time series. *J. Bus. Econ. Stat.* 1, 169. <https://doi.org/10.2307/1391858>
- Londono, J.M., Zhou, H., 2017. Variance risk premiums and the forward premium puzzle. *J. financ. econ.* 124, 415–440. <https://doi.org/10.1016/j.jfineco.2017.02.002>
- Markowitz, H., 1952. Portfolio selection. *J. Finance* 7, 77–91. <https://doi.org/10.1111/j.1540-6261.1952.tb01525.x>
- Neely, C.J., 2015. Unconventional monetary policy had large international effects. *J. Bank. Financ.* 52, 101–111. <https://doi.org/10.1016/j.jbankfin.2014.11.019>
- Nier, E., Saadi Sedik, T., Mondino, T., 2014. Gross private capital flows to emerging markets: Can the global financial cycle be tamed? *IMF Work. Pap.* 14, 1. <https://doi.org/10.5089/9781498351867.001>
- Psaradakis, Z., Spagnolo, N., 2003. On the determination of the number of regimes in Markov-switching autoregressive models. *J. Time Ser. Anal.* 24, 237–252. <https://doi.org/10.1111/1467-9892.00305>

- Rosa, C., 2012. How “unconventional” are large-scale asset purchases?
- Sari, R., Soytas, U., Hacıhasanoglu, E., 2011. Do global risk perceptions influence world oil prices? *Energy Econ.* 33, 515–524. <https://doi.org/10.1016/j.eneco.2010.12.006>
- Sarwar, G., Khan, W., 2019. Interrelations of U.S. market fears and emerging markets returns: Global evidence. *Int. J. Financ. Econ.* 24, 527–539. <https://doi.org/10.1002/ijfe.1677>
- Sarwar, G., Khan, W., 2017. The effect of US stock market uncertainty on emerging market returns. *Emerg. Mark. Financ. Trade* 53, 1796–1811. <https://doi.org/10.1080/1540496X.2016.1180592>
- Smith, A., Naik, P.A., Tsai, C.L., 2006. Markov-switching model selection using Kullback-Leibler divergence. *J. Econom.* 134, 553–577. <https://doi.org/10.1016/j.jeconom.2005.07.005>
- Stulz, R.M., 1995. Chapter 6 International Portfolio Choice and Asset Pricing: An Integrative Survey. *Handbooks Oper. Res. Manag. Sci.* 9, 201–223. [https://doi.org/10.1016/S0927-0507\(05\)80050-7](https://doi.org/10.1016/S0927-0507(05)80050-7)
- Ueda, K., 2012. The effectiveness of non-traditional monetary policy measures: The case of the bank of Japan. *Japanese Econ. Rev.* 63, 1–22. <https://doi.org/10.1111/j.1468-5876.2011.00547.x>
- Vayanos, D., 2004. Flight to quality, flight to liquidity, and the pricing of risk (No. 10327), NBER Working Paper Series. Cambridge, MA. <https://doi.org/10.3386/w10327>

Appendix

Table A 1 Unit root and cointegration tests for alternative differential variables
(sample: 2009/01/26- 2019/07/08)

Panel A- Unit root test		
Variable	ADF test ¹	Breakpoint unit root test ²
Diff_ <i>LRES</i>	-4.3062 [0.0033] ³	-7.1123 [< 0.01] ³
Diff_ <i>LST</i>	-2.1935 [0.2090] ⁴	-2.8914 [0.7430] ⁴

Panel B- Cointegration trace test		
Reference currencies		LJPY/USD, Diff_ <i>LST</i>
Model		VAR(2)
Trace test	Rank 0	7.0360 [0.580]
	Rank 1	1.5814 [0.209]

- Values in square brackets are p-values.
- Diff_ *LRES*: the differential between the log-transformed Japanese and US reserves, Diff_ *LST*: the differential between the log-transformed Nikkei 225 and S&P 500 prices, LJPY/USD: log-transformed JPY/USD exchange rate.
- 1. The number of lags for the Augmented Dickey-Fuller test (1979) is chosen by SC; MacKinnon (1996) one-sided p-values.
- 2. Vogelsang (1993) asymptotic one-sided p-values.
- 3. Intercept and trend included.
- 4. Intercept included.

Table A 2 Information criteria obtained based on linear VAR estimation of Equation (2) for the lag selection
(sample: 2009/01/26- 2019/07/08)

Lag	AIC	SC	HQ
0	-19.77207	-19.74010	-19.75956
1	-21.78944	-21.62959	-21.72691
2	-21.95583*	-21.66809*	-21.84326*
3	-21.92047	-21.50484	-21.75787
4	-21.89069	-21.34718	-21.67806
5	-21.85484	-21.18344	-21.59217
6	-21.85688	-21.05760	-21.54418
7	-21.83477	-20.90760	-21.47204
8	-21.80237	-20.74733	-21.38961
9	-21.80607	-20.62314	-21.34328
10	-21.84517	-20.53435	-21.33234
11	-21.87965	-20.44095	-21.31680
12	-21.87757	-20.31098	-21.26468

* indicates the optimal number of lags suggested by each criterion.

Table A 3 VAR Granger causality /Block exogeneity tests (sample: 2009/01/26- 2019/07/08)

Dependent variable	Excluded	Chi-sq	Dependent variable	Excluded	Chi-sq
Diff_IV	Diff_DLRES	6.1327**	Diff_SR	Diff_IV	4.4796
	Diff_SR	1.4935		Diff_DLRES	2.3337
	DLJPY/USD	0.1456		DLJPY/USD	19.8452***
	All	8.9221		All	32.7102***
Diff_DLRES	Diff_IV	2.8119	DLJPY/USD	Diff_IV	2.6396
	Diff_SR	1.5392		Diff_DLRES	7.7279**
	DLJPY/USD	2.9300		Diff_SR	10.8546***
	All	6.5321		All	20.4197***

*** Significant at the 1% level, ** significant at the 5% level, * significant at the 10% level

- DLJPY/USD: returns of the Japanese yen vis-à-vis the US dollar, Diff_SR: the differential between the Japanese and the US stock market returns, Diff_IV: the differential between the log transformations of VXJ and VIX, Diff_DLRES: the differential of the Japanese and the US reserves growth.

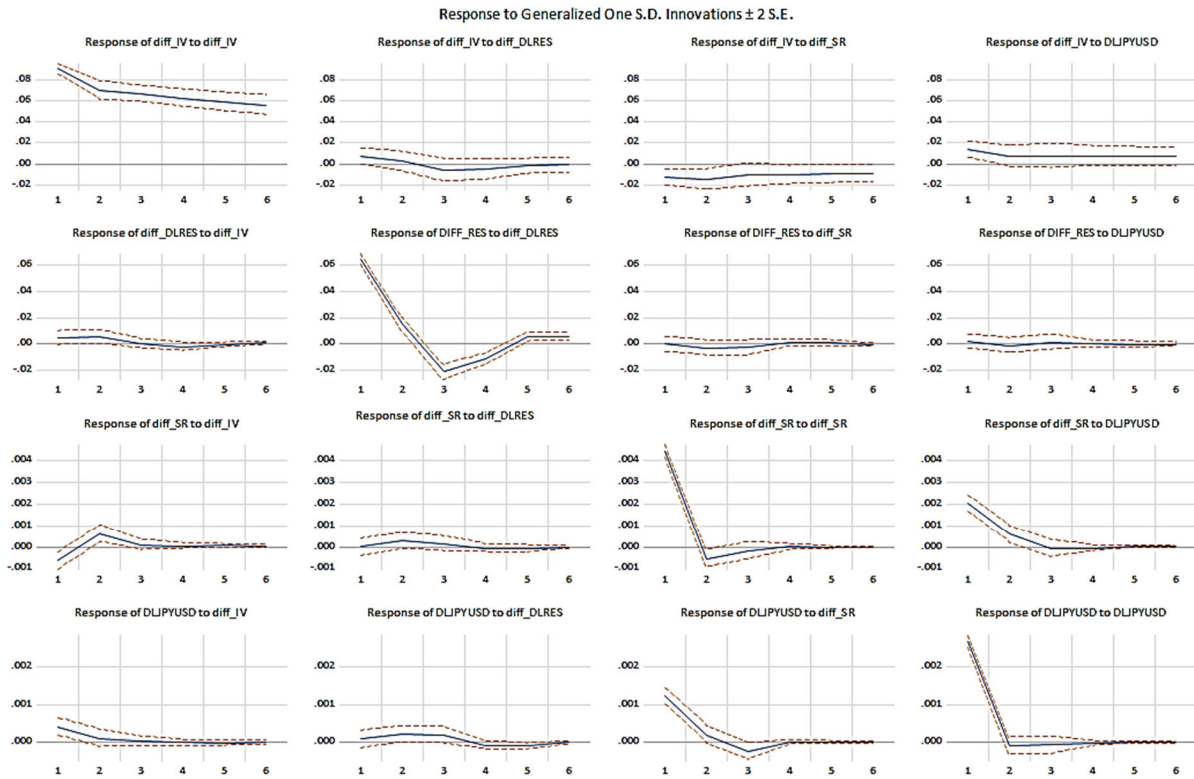


Figure A 1 Generalized impulse response functions of the VAR(2) model (sample: 2009/01/26- 2019/07/08)
Notes: DLJPYUSD: returns of the Japanese yen vis-à-vis the US dollar, Diff_SR: the differential between the Japanese and the US stock market returns, Diff_IV: the differential between the log transformations of VXJ and VIX, Diff_DLRES: the differential of the Japanese and the US reserves growth.

Table A 4 Markov-switching information criterion (MSC) for estimations of Equation (2)
(sample: 26/01/2009-08/07/2019)

	S=1	S=2	S=3	S=4
Lag=1	-4365.27	-4369.03	-4340.62	-4251.46
Lag=2	-4366.61	-4374.34	-3890.36	-4038.28

- S shows the number of regimes.
- The shaded cell indicates the model suggested by MSC.

Table A 5 Regime classification based on smoothed probabilities for the selected MS model
(sample: 26/01/2009-08/07/2019)

Regime 1	periods	avg. Prob.	Regime 2	periods	avg. Prob.
2010-06-21 - 2011-02-28	37	0.872	2009-01-26 - 2010-06-14	73	0.971
2011-05-09 - 2013-02-25	95	0.927	2011-03-07 - 2011-05-02	9	0.853
2013-08-26 - 2015-12-28	123	0.942	2013-03-04 - 2013-08-19	25	0.894
2017-05-22 - 2019-07-08	112	0.93	2016-01-04 - 2017-05-15	72	0.912
Total: 367 weeks (67.22%) with average duration of 91.75 weeks.			Total: 179 weeks (32.78%) with average duration of 44.75 weeks.		

Table A 6 Comparison of the fit of the linear, selected MS and constrained models (sample: 26/01/2009-08/07/2019)

Excluded variable	Selected model		Constrained models					
			Diff_IV		Diff_ALRES		Diff_SR (-1)	
	Regime 1	Regime 2	Regime 1	Regime 2	Regime 1	Regime 2	Regime 1	Regime 2
Constant	0.0001 (0.0001)		0.0001 (0.0001)		-		0.0000 (0.0001)	
$\Delta LJPY/USD$ (-1)	-0.1191** (0.0480)		-0.1292*** (0.0487)		-0.1054** (0.0482)		-0.1687* (0.0976)	-0.0185 (0.0580)
$\Delta LJPY/USD$ (-2)	0.1543** (0.0621)	-0.1037 (0.0768)	0.0379 (0.0490)		0.1738*** (0.0623)	-0.1310* (0.0708)	-0.0097 (0.0451)	
Diff_SR (-1)	0.0948*** (0.0273)		0.0809*** (0.0269)		0.0856*** (0.0273)		-	
Diff_SR (-2)	-0.0278 (0.0264)		-0.0267 (0.0269)		-0.0314 (0.0263)		-	
Diff_IV	0.0048*** (0.0012)		-		0.0049*** (0.0011)		0.0053*** (0.0012)	
Diff_IV (-1)	-0.0019 (0.0015)		-		-0.0015 (0.0015)		-0.0033** (0.0015)	
Diff_IV (-2)	-0.0024* (0.0013)	-0.0037** (0.0017)	-		-0.0028 (0.0012)		-0.0019 (0.0012)	
Diff_ALRES	0.0012 (0.0017)		0.0009 (0.0018)		-		0.0013 (0.0018)	
Diff_ALRES (-1)	-0.0060*** (0.0022)	0.0084*** (0.0029)	-0.0064*** (0.0023)	0.0094*** (0.0028)	-		-0.0044 (0.0033)	0.0059** (0.0025)
Diff_ALRES (-2)	0.0036** (0.0017)		0.0024 (0.0017)		-		0.0034* (0.0019)	
Variance	0.0020*** (0.0001)	0.0034*** (0.0002)	0.0019*** (0.0001)	0.0034*** (0.0002)	0.0019*** (0.0001)	0.0034*** (0.0002)	0.0014*** (0.0002)	0.0032*** (0.0002)
prob. of per.	0.99%	0.97%	98%	97%	99%	98%	85%	93%
Log likelihood	2502.63005		2491.37935		2496.0271		2491.9201	
SC	-8.95936438		-8.97586932		-8.98135078		-8.93512639	
AIC	-9.10120896		-9.07831263		-9.09167435		-9.06930439	
Likelihood ratio test			22.50*** [0.0001]		13.206 *** [0.0042]		21.42 *** [0.0001]	

*** Significant at 1% level, ** Significant at 5% level, * Significant at 10% level

- Standard errors are shown in parenthesis and p-values in squared brackets.

- $\Delta LJPY/USD$: returns of the Japanese yen vis-à-vis the US dollar, Diff_SR: the differential between the Japanese and the US stock market returns, Diff_IV: the differential between the log transformations of VXJ and VIX, Diff_ALRES: the differential of the Japanese and the US reserves growth.

